

Slide 1

**Networking and Health  
Information Exchange**

Unit 4d  
Basic Health Data Standards

Component 9/Unit #4d      Health IT Workforce Curriculum  
Version 1.0 Fall 2010

---

---

---

---

---

---

---

Slide 2

**Unit 4d Objectives**

- Understand data elements; attributes of data elements

Component 9/Unit #4d      Health IT Workforce Curriculum  
Version 1.0 Fall 2010

---

---

---

---

---

---

---

Slide 3

**Why data elements?**

- The level at which data is created and collected
  - Level that is necessary to define clinical models and input for clinical decision making
- Level at which data elements can be precisely, uniquely and unambiguously defined that is independent of use, location and circumstance.
- Simplifies achieving semantic interoperability
- Essential for computer understandability

Component 9/Unit #4d      Health IT Workforce Curriculum  
Version 1.0 Fall 2010

---

---

---

---

---

---

---

Slide 4

**Data elements and terminology**

- What is a data element and what is a terminology?
- Is diagnosis a data element or a terminology?
  
- Any and every concept is a data element

Component 9/Unit #4d Health IT Workforce Curriculum Version 1.0 Fall 2010 4

---

---

---

---

---

---

---

Slide 5

**Data elements**

- Each data element assigned a unique code for identification purposes.
- Each data element will be derived to a level of precision to prevent any ambiguity in its meaning and use.
- If uniform agreement cannot be reached for an element, an element will be defined for each agreement with precise definitions to distinguish. Experience in use might ultimately resolve these disagreements.

Component 9/Unit #4d Health IT Workforce Curriculum Version 1.0 Fall 2010 5

---

---

---

---

---

---

---

Slide 6

**Data element set**

- Defines at the lowest level the structured components that are contained and used in health care.
- If all data is derived from this master data element set, data can be shared and understood independent of the interchange mechanism
- Can be harmonized across clinical domains
- Permits sites to define the data they collect

Component 9/Unit #4d Health IT Workforce Curriculum Version 1.0 Fall 2010 6

---

---

---

---

---

---

---

Slide 7

**Master data element set**

- Enables sites to define what data elements are collected and stored as part of the EHR
- From this master, minimum data sets may be derived for various purposes, for example, a minimum data set defining decision support inputs, reporting quality measures or to a clinical data registry.
- Becomes the basis for interoperability in the interchange of data

Component 9/Unit #4d      Health IT Workforce Curriculum  
Version 1.0 Fall 2010      7

---

---

---

---

---

---

---

---

Slide 8

**Master data element set**

- The MDE set will include categorical terms from high to lower levels. The level of defining these levels will be a development issue. It is most likely that these will be hierarchical.
- Class examples include:
  - Demographic
  - Studies
  - Therapies
  - Problems
  - Physical Examination

Component 9/Unit #4d      Health IT Workforce Curriculum  
Version 1.0 Fall 2010      8

---

---

---

---

---

---

---

---

Slide 9

**Other uses**

- It is likely that most data exchanges between various sites of care will be in a query response mode. A site's database of the data elements collected will make it much easier to define what is available and what is desired.
- Query profiles can be defined from the site's data element set.
- Permits local, dynamic classification sets for various purposes, including medical specialties

Component 9/Unit #4d      Health IT Workforce Curriculum  
Version 1.0 Fall 2010      9

---

---

---

---

---

---

---

---

Slide 10

**Attributes**

- Unique code
- Short name or acronym
- Long name
- Synonyms
- Definition
- Use and purpose, including context
- Category
- Units
- Data type
- Value set
- Mood (state)
- RIM Class
- Linkages to representation sets
- ...

Component 9/Unit #4d      Health IT Workforce Curriculum  
Version 1.0 Fall 2010      10

---

---

---

---

---

---

---

---

Slide 11

**List of attributes (1)**

- Code
  - numeric without meaning
  - OID hierarchically assigned
- Name
  - As used in clinical setting
  - Preferred
  - Short name or display name
- Definition
  - Textual
  - Structured

Component 9/Unit #4d      Health IT Workforce Curriculum  
Version 1.0 Fall 2010      11

---

---

---

---

---

---

---

---

Slide 12

**List of attributes (2)**

- Data type
  - Chosen from ISO/HL7/CEN standard
  - Simple or complex
- Units
  - Scientific; ISO
- Value set
  - A set of permissible values
  - Single or multiple
- Synonyms

Component 9/Unit #4d      Health IT Workforce Curriculum  
Version 1.0 Fall 2010      12

---

---

---

---

---

---

---

---

Slide 13

**List of attributes (3)**

- Relationship to other data elements
  - Hierarchical relationships
  - Bidirectional (parent, children)
  - Other linkages (equivalent, opposite)
  - Flags: top level; leaf level
- Classifications (Antihistamine, beta blocker)
- Language

Component 9/Unit #4d      Health IT Workforce Curriculum  
Version 1.0 Fall 2010      13

---

---

---

---

---

---

---

---

Slide 14

**Administrative attributes**

- Owner/caretaker/steward/responsible organization
- Submitting organization
- Registration authority
- Status (active/inactive or deprecated)
- Version
- Date

Component 9/Unit #4d      Health IT Workforce Curriculum  
Version 1.0 Fall 2010      14

---

---

---

---

---

---

---

---

Slide 15

**Potential issues**

- Data elements should not be controversial, since they represent a master set, not a required set.
- Categories and groupings of data elements subject to discussion and debate
- Attribute sets subject to discussion and debate
- Tool sets might evolve in functionality provided
- Early user would be essential to define issues, gaps, unforeseen consequences
- Permanent support, including maintenance and distribution must be defined, including funding

Component 9/Unit #4d      Health IT Workforce Curriculum  
Version 1.0 Fall 2010      15

---

---

---

---

---

---

---

---

Slide 16

**What is ISO/IEC 11179?**

- ISO/IEC 11179 Parts 1-6: Information technology – Specification and Standardization of data elements
  - A metamodel for 'data element' metadata
  - Standard by which to convey semantic, syntactic and lexical meaning
    - Human and machine understandable
    - Unambiguous

Component 9/Unit #4d Health IT Workforce Curriculum Version 1.0 Fall 2010 16

---

---

---

---

---

---

---

---

Slide 17

**ISO 11179**

- Part 1: *Framework for the Specification and Standardization of Data Elements*
- Part 2: *Classification for Data Elements*
- Part 3: **Basic Attributes of Data Elements**
- Part 4: *Rules and Guidelines for the Formulation of Data Definitions*
- Part 5: *Naming and Identification Principles for Data Elements*
- Part 6: *Registration of Data Elements*

Component 9/Unit #4d Health IT Workforce Curriculum Version 1.0 Fall 2010 17

---

---

---

---

---

---

---

---

Slide 18

**Data Element Details**

**Sex**  
Sex

[\(Relationship and Representational Attributes\)](#)
[\(Administrative Attributes\)](#)
[\(Data Collection Issues\)](#)
[\(Data Element Table\)](#)

**Identifying and Definitional Attributes**

Data Element ID: NEDMG 000149 Version No: 2  
 Type: Data Element  
 Status: Current  
 01-JUL-98

**Definition:** The sex of the person.  
**Context:** Required for analyses of service utilization, needs for services and epidemiological studies.

**Synonymous Name and context:** Gender  
 Dictionary ID: 34

Component 9/Unit #4d Health IT Workforce Curriculum Version 1.0 Fall 2010 18

---

---

---

---

---

---

---

---



Slide 22

**caBIG**

- Vocabularies & Common Data Elements
- Evaluate and integrate systems for vocabulary and ontology content development used throughout caBIG system
- Review process classifies vocabulary into bronze, silver, gold categories with rigid rules for definition
- Stores in caDSR, EVS

Component 9/Unit #4d Health IT Workforce Curriculum Version 1.0 Fall 2010 22

---

---

---

---

---

---

---

---

Slide 23

**CDISC**

- Study Data Tabulation Model – data elements used for clinical trials
- Uses NCI's caDSR
- Operational Data Model (ODM)

Component 9/Unit #4d Health IT Workforce Curriculum Version 1.0 Fall 2010 23

---

---

---

---

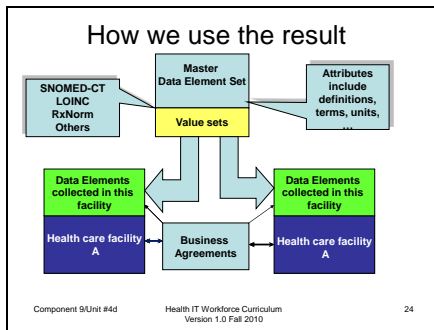
---

---

---

---

Slide 24



---

---

---

---

---

---

---

---



Slide 25

**Summary**

- Necessary part of semantic interoperability
- Importance of fully defined set of characteristics
- Use 11179 standard as base
- Need global commitment

Component 9/Unit 4d      Health IT Workforce Curriculum  
Version 1.0 Fall 2010      25

---

---

---

---

---

---

---