

HIT Infecting a Patient Safety Culture

Unit 9.2: Strategies for Adaptive Work

Component 12/Unit 9

Health IT Workforce Curriculum
Version 1.0/Fall 2010

1

Objectives

At the end of this segment, the student will be able to:

- Identify strategies for adaptive work that can be useful to HIT initiatives.

Component 12/Unit 9

Health IT Workforce Curriculum
Version 1.0/Fall 2010

2



Component 12/Unit 9

Health IT Workforce Curriculum
Version 1.0/Fall 2010

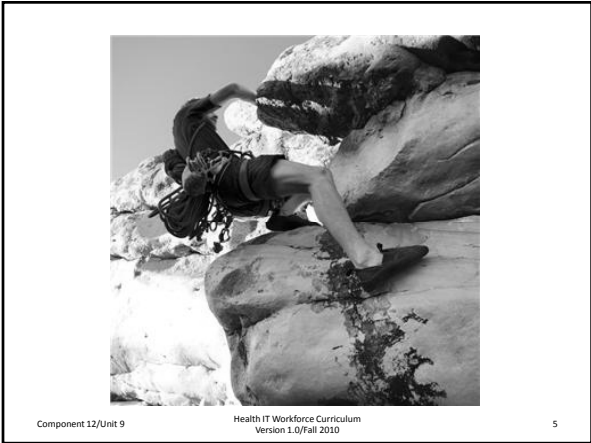
3



Component 12/Unit 9

Health IT Workforce Curriculum
Version 1.0/Fall 2010

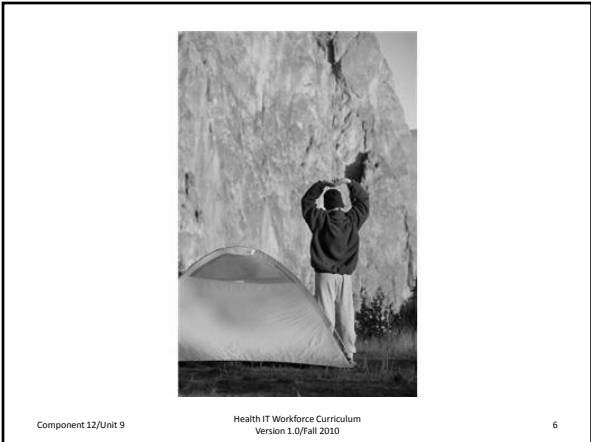
4



Component 12/Unit 9

Health IT Workforce Curriculum
Version 1.0/Fall 2010

5



Component 12/Unit 9

Health IT Workforce Curriculum
Version 1.0/Fall 2010

6



Component 12/Unit 9

Health IT Workforce Curriculum
Version 1.0/Fall 2010

7



Component 12/Unit 9

Health IT Workforce Curriculum
Version 1.0/Fall 2010

8



Component 12/Unit 9

Health IT Workforce Curriculum
Version 1.0/Fall 2010

9



Component 12/Unit 9

Health IT Workforce Curriculum
Version 1.0/Fall 2010

10



Component 12/Unit 9

Health IT Workforce Curriculum
Version 1.0/Fall 2010

11



Component 12/Unit 9

Health IT Workforce Curriculum
Version 1.0/Fall 2010

12



Component 12/Unit 9

Health IT Workforce Curriculum
Version 1.0/Fall 2010

13



Component 12/Unit 9

Health IT Workforce Curriculum
Version 1.0/Fall 2010

14



Component 12/Unit 9

Health IT Workforce Curriculum
Version 1.0/Fall 2010

15



Component 12/Unit 9

Health IT Workforce Curriculum
Version 1.0/Fall 2010

16



Component 12/Unit 9

Health IT Workforce Curriculum
Version 1.0/Fall 2010

17



Component 12/Unit 9

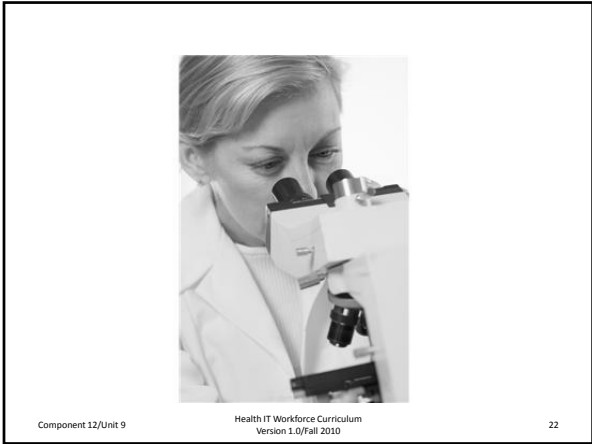
Health IT Workforce Curriculum
Version 1.0/Fall 2010

18





















Component 12/Unit 9

Health IT Workforce Curriculum
Version 1.0/Fall 2010



Component 12/Unit 9

Health IT Workforce Curriculum
Version 1.0/Fall 2010

Summary

- Be unwavering in the hill you are about to climb; invite others to help you climb it
- Make sure that there are no monsters in the bathroom
- Surface the real and perceived loss
- Value the dissenter
- Assume that healthcare providers want to do what's right for patients

Health IT Workforce
Curriculum
Version 1.0/Fall 2010

Health IT Workforce Curriculum Version
1.0/Fall 2010
