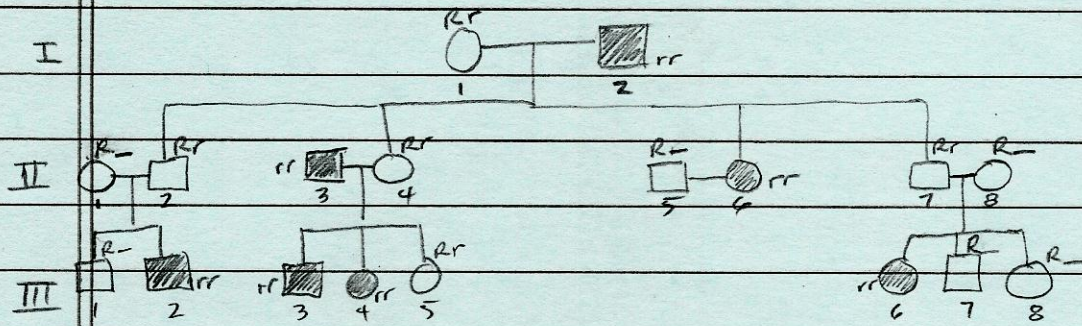


11-20-12



- 1) Read & understand the key
- 2) # the generations & individuals
- 3) Fill in what you know
- 4) Do the detective work

Key

□ = ♂
 ○ = ♀
 ■ or ● = show characteristic of interest
 ■ = red hair
 R = not red
 r = red hair

Punnet Square

In Seals $B = \text{Blue Eyes}$
 $b = \text{yellow eyes}$

cross 2 blue-eyed seals heterozygous
for eye color

- What % = yellow eyes? 25%

	B	b
B	BB	Bb
b	Bb	bb

Bio 3 p2 Bacteria - The dominant life form on the planet

11-20-12

- > Prokaryotic: have lack of nucleus
 - $\frac{2}{3}$ of world's diversity = bacteria
- > 4.5 billion years: earth forms
- > 25% body weight = bacteria
 - 10 billion in mouth
- > Success based on:
 - Time evolution
 - Conjugation (copy itself)
- > Probiotics: good bacteria in body
- > Fermentation:
 - Yeast \neq bacteria
 - Bacteria causes Sour taste
- > Used to make medicines & enzymes
- > Bad Bacteria
 - Pathogens: agents which cause disease
 - o Invade, attach & multiply
 - o Poison; produce toxin to stop normal processes
- > Killer Bacteria

T.B.	Gonorrhea / Syphilis	Toxic Shock Syndrome
Cholera	Bubonic Plague	
Meningitis	Leprosy	
- > Food Poisoning

Salmonella	Botulism
E. Coli	

> Food Processing Dangers

- Contamination - modern food processing
- Rapid Replication - improper refrigeration/handling
- No Preventative Action - no sterilization

> Replication $\approx 45-130^{\circ}F$