

Component 4: Introduction to Information and Computer Science

Unit 6: Databases and SQL Lecture 5

This material was developed by Oregon Health & Science University, funded by the Department of Health and Human Services, Office of the National Coordinator for Health Information Technology under Award Number 1U24OC000015.

Topic V: Define the Basic Data Operations for Databases and How to Implement them in SQL

- SQL Standards
- Create the Database
- Create Tables
- Create Relationships

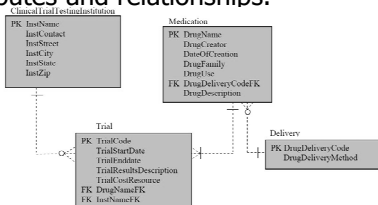
Component 4/Unit 6-5

Health IT Workforce Curriculum
Version 2.0/Spring 2011

2

Implementation of a Relational Database Data Model

- Use a small four-table database to show the creation of a database with its tables, attributes and relationships.



Component 4/Unit 6-5

Health IT Workforce Curriculum
Version 2.0/Spring 2011

3

SQL Standards

- Every DBMS is supposed to support standard SQL as defined by ANSI and ISO.
- Basic SQL statements vary only slightly from one DBMS to another
- Many of the more sophisticated DBMSs like SQL Server and Oracle differ once you get beyond basic SQL statements
- We will look at some basic SQL statements

Component 4/Unit 6-5

Health IT Workforce Curriculum
Version 2.0/Spring 2011

4

SQL to Create the Database

- This SQL example is for SQL Server, but something similar would be used with other DBMSs

```
CREATE DATABASE DrugTrials
ON
(Name=DrugTrials.dat,
FILENAME='C:\componenet4\DrugTrials.mdf');
```

- Other parameters could be specified, but this takes advantage of default values

Component 4/Unit 6-5

Health IT Workforce Curriculum
Version 2.0/Spring 2011

5

SQL to Create a Table

```
CREATE TABLE ClinicalTrialTestingInstitution
(
  InstName VARCHAR(15) NOT NULL,
  InstContact INT NOT NULL,
  InstStreet VARCHAR(15) NULL,
  InstCity VARCHAR(12) NULL,
  InstState VARCHAR(2) NULL,
  InstZip VARCHAR(9) NULL,
  CONSTRAINT InstNamePK PRIMARY KEY(InstName)
);
```

Component 4/Unit 6-5

Health IT Workforce Curriculum
Version 2.0/Spring 2011

6

SQL to Create a Second Table

```
CREATE TABLE Trial
(
  TrialCode          int          NOT NULL,
  TrialStartDate     datetime    NOT NULL,
  TrialEndDate       datetime    NULL,
  TrialResultsDescription varchar(100) NULL,
  TrialCostResource  varchar(20) NULL,
  DrugNameFK        varchar(20) NOT NULL,
  InstNameFK        varchar(15) NOT NULL,
  CONSTRAINT TrialCodePK PRIMARY KEY (TrialCode)
);
```

Component 4/Unit 6-5

Health IT Workforce Curriculum
Version 2.0/Spring 2011

7

Creating a Relationship

To complete the relationship between two tables the DBMS must be informed about the primary to foreign key connection.

```
ALTER TABLE Trial
  ADD CONSTRAINT CInstNameFK
  FOREIGN KEY (InstNameFK)
  REFERENCES
    ClinicalTrialTestingInstitution (InstName)
  ON UPDATE CASCADE;
```

Component 4/Unit 6-5

Health IT Workforce Curriculum
Version 2.0/Spring 2011

8
