

**Safe Workflow Design**

Unit 7.1: Workflow Assessment

Component 12/Unit #7 Health IT Workforce Curriculum Version  
1.0/Fall 2010 1

---

---

---

---

---

---

---

---

**Objectives**

At the end of this segment, the student will be able to:

- Assess decision-making requirements in health or health care

Component 12/Unit #7 Health IT Workforce Curriculum Version  
1.0/Fall 2010 2

---

---

---

---

---

---

---

---

**Clinical Decision-Making**

- Systematic way to handle data and clinical algorithms to decide on a best course of action
- Algorithm = a step-by-step procedure for solving a problem.

Component 12/Unit #7 Health IT Workforce Curriculum Version  
1.0/Fall 2010 3

---

---

---

---

---

---

---

---

## Clinical Decision Making: Uncertainty

Technical	Personal	Conceptual
<ul style="list-style-type: none"><li>• What should I do?</li></ul>	<ul style="list-style-type: none"><li>• What are the patients' wishes?</li></ul>	<ul style="list-style-type: none"><li>• How do I apply abstract concepts to concrete situations?</li></ul>

Component 12/Unit #7

Health IT Workforce Curriculum Version  
1.0/Fall 2010

4

---

---

---

---

---

---

---

---

## Clinical Decision Making: Uncertainty

Direct	Indirect
<ul style="list-style-type: none"><li>• Knowing what we know</li><li>• Knowing what is being researched</li><li>• Knowing what works</li></ul>	<ul style="list-style-type: none"><li>• Establishing a communication infrastructure</li><li>• Establishing evaluation of processes and outcomes of care</li></ul>

Component 12/Unit #7

Health IT Workforce Curriculum Version  
1.0/Fall 2010

5

---

---

---

---

---

---

---

---

## Clinical Decision-Making: Expert Decision-Making Systems

- Improve task performance and reduce errors within the clinical workspace
- Depend on:
  - Analysis of clinical requirements and cognitive processes within the workflow
  - Provide optimal situation awareness through information visualization

Component 12/Unit #7

Health IT Workforce Curriculum Version  
1.0/Fall 2010

6

---

---

---

---

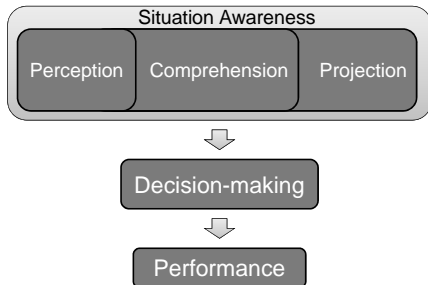
---

---

---

---

## Basic Elements of Decision-Making



Component 12/Unit #7

Health IT Workforce Curriculum Version  
1.0/Fall 2010

7

---

---

---

---

---

---

---

---

## Information Visualization

- Real-time information needed for clinical task performance and decision-making
- Should support 2 levels of complexity
  - Routine tasks
  - Complex (uncertain)tasks
- Comprehensive, integrated across phases of care
- Provide visual cues to avoid ambiguity

Component 12/Unit #7

Health IT Workforce Curriculum Version  
1.0/Fall 2010

8

---

---

---

---

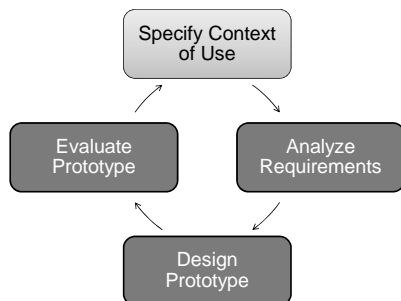
---

---

---

---

## Human-Centered Design Cycle



Component 12/Unit #7

Health IT Workforce Curriculum Version  
1.0/Fall 2010

9

---

---

---

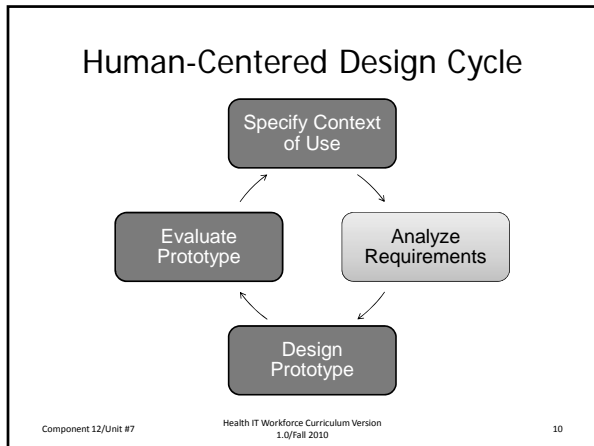
---

---

---

---

---




---

---

---

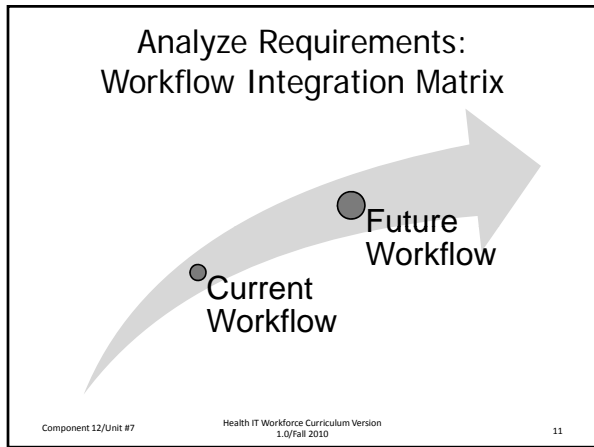
---

---

---

---

---




---

---

---

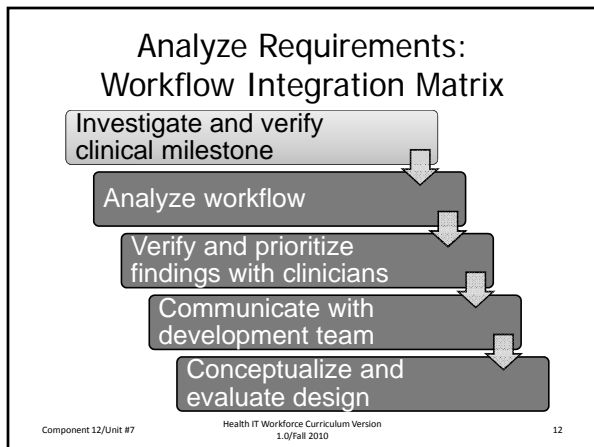
---

---

---

---

---




---

---

---

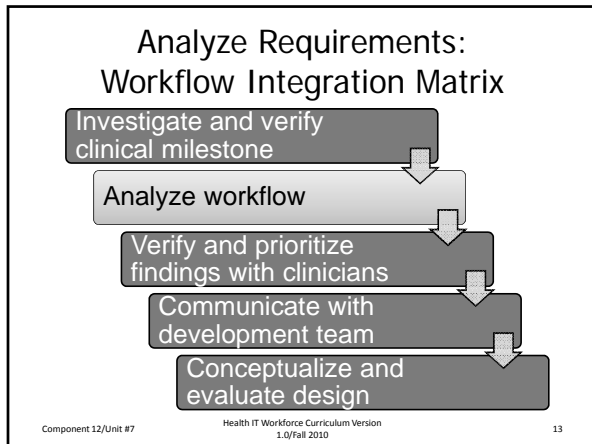
---

---

---

---

---




---

---

---

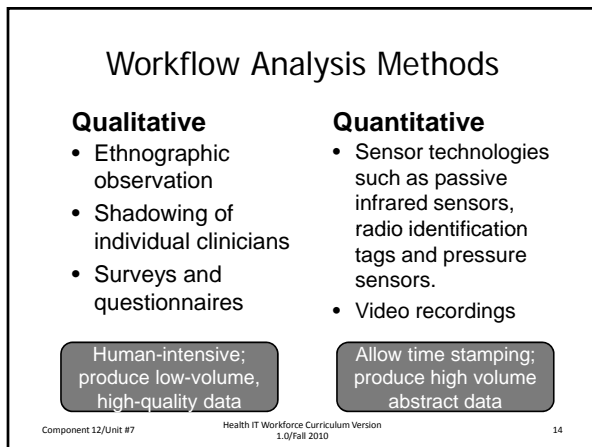
---

---

---

---

---




---

---

---

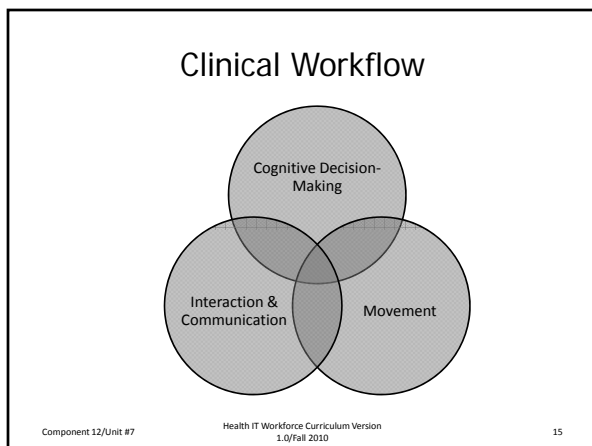
---

---

---

---

---




---

---

---

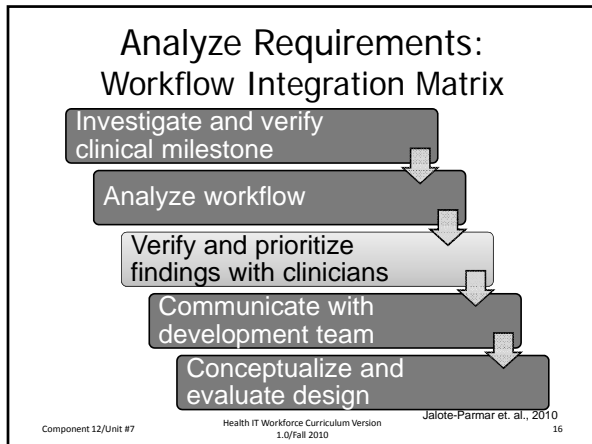
---

---

---

---

---




---

---

---

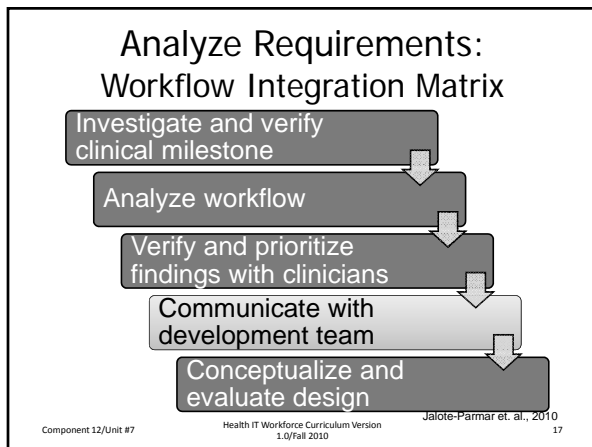
---

---

---

---

---




---

---

---

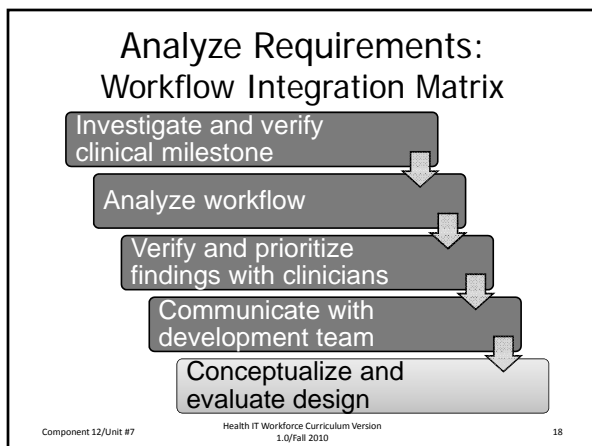
---

---

---

---

---




---

---

---

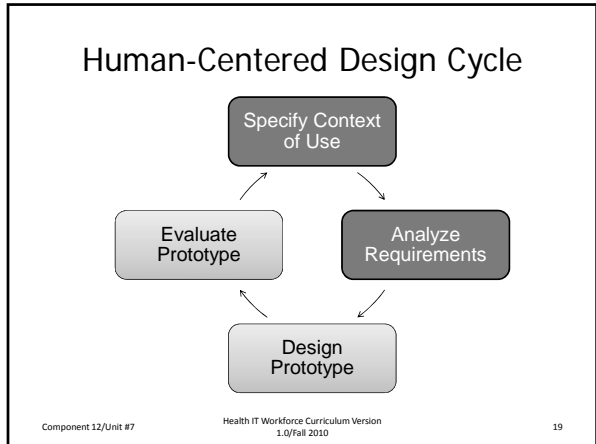
---

---

---

---

---




---

---

---

---

---

---

---

---

### Cognitive Task Analysis

- Family of methods for understanding the cognitive processes that underlie task performance and the cognitive skills needed to respond adeptly to complex situations.
- Used to understand decision-making and communication processes
- Has implications for workflow design

Component 12/Unit #7      Health IT Workforce Curriculum Version 1.0/Fall 2010      20

---

---

---

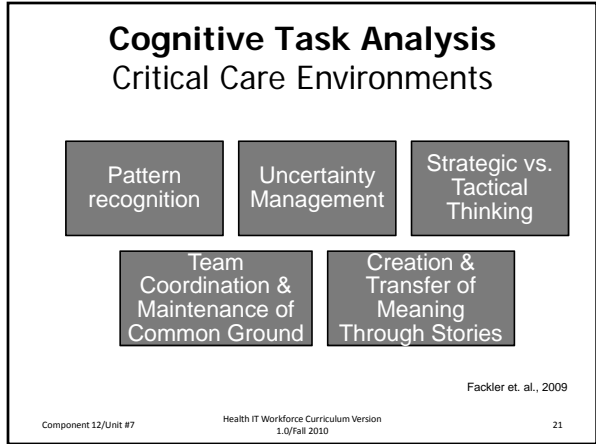
---

---

---

---

---




---

---

---

---

---

---

---

---

## Cognitive Task Analysis Critical Care Environments

Pattern  
recognition

Uncertainty  
Management

Strategic vs.  
Tactical  
Thinking

Team  
Coordination &  
Maintenance of  
Common Ground

Creation &  
Transfer of  
Meaning  
Through Stories

Component 12/Unit #7 Health IT Workforce Curriculum Version 1.0/Fall 2010 22

---

---

---

---

---

---

---

---

## Cognitive Task Analysis Critical Care Environments

Pattern  
recognition

Uncertainty  
Management

Strategic vs.  
Tactical  
Thinking

Team  
Coordination &  
Maintenance of  
Common Ground

Creation &  
Transfer of  
Meaning  
Through Stories

Component 12/Unit #7 Health IT Workforce Curriculum Version 1.0/Fall 2010 23

---

---

---

---

---

---

---

---

## Cognitive Task Analysis Critical Care Environments

Pattern  
recognition

Uncertainty  
Management

Strategic vs.  
Tactical  
Thinking

Team  
Coordination &  
Maintenance of  
Common Ground

Creation &  
Transfer of  
Meaning  
Through Stories

Component 12/Unit #7 Health IT Workforce Curriculum Version 1.0/Fall 2010 24

---

---

---

---

---

---

---

---



## Cognitive Task Analysis Critical Care Environments

Pattern  
recognition

Uncertainty  
Management

Strategic vs.  
Tactical  
Thinking

Team  
Coordination &  
Maintenance of  
Common Ground

Creation &  
Transfer of  
Meaning  
Through Stories

Component 12/Unit #7 Health IT Workforce Curriculum Version 1.0/Fall 2010 25

---

---

---

---

---

---

---

---

## Cognitive Task Analysis Critical Care Environments

Pattern  
recognition

Uncertainty  
Management

Strategic vs.  
Tactical  
Thinking

Team  
Coordination &  
Maintenance of  
Common Ground

Creation &  
Transfer of  
Meaning  
Through Stories

Component 12/Unit #7 Health IT Workforce Curriculum Version 1.0/Fall 2010 26

---

---

---

---

---

---

---

---

## Summary

- Clinical decision making is a systematic way of handling data and algorithms to decide on the best course of action
- Uncertainty (technical, personal, and conceptual) shapes clinical decisions
- Workflow integration matrices are useful
- Cognitive task analysis uncovers decision-making and communication processes and has implications for workflow analysis

Component 12/Unit #7 Health IT Workforce Curriculum Version 1.0/Fall 2010 27

---

---

---

---

---

---

---

---