

**Data Quality Improvement**

Unit 11.2a: Data Quality Attributes

Component 12/Unit 11 Health IT Workforce Curriculum Version 1.0/Fall 2010 1

---

---

---

---

---

---

---

---

**Objective**

At the end of this segment, the student will be able to:

- Identify ten attributes of data quality and key process recommendations

Component 12/Unit 11 Health IT Workforce Curriculum Version 1.0/Fall 2010 2

---

---

---

---

---

---

---

---

**Data Quality**

**Objective**

- Contextual knowledge of application is not necessary
- Reflects business rules, regulation or constraints

**Subjective**

- Reflects stakeholder needs/experiences
- Conclusion varies by user or specific use of data

Component 12/Unit 11 Health IT Workforce Curriculum Version 1.0/Fall 2010 3

---

---

---

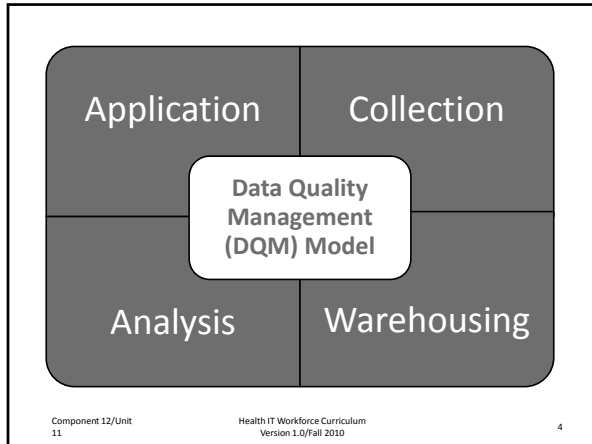
---

---

---

---

---




---

---

---

---

---

---

---

---

### Data Quality Attributes

- Definition
- Accuracy
- Accessibility
- Comprehensiveness
- Consistency
- Currency
- Timeliness
- Granularity
- Precision
- Relevancy

Component 12/Unit 11 Health IT Workforce Curriculum Version 1.0/Fall 2010 5

---

---

---

---

---

---

---

---

### Data Quality Attributes

- Definition
- Accuracy
- Accessibility
- Comprehensiveness
- Consistency
- Currency
- Timeliness
- Granularity
- Precision
- Relevancy

Component 12/Unit 11 Health IT Workforce Curriculum Version 1.0/Fall 2010 6

---

---

---

---

---

---

---

---

## Definitions of Data

- Definitions should be provided so current and future users will know what the data mean
- Each element should have clear meaning and acceptable values

AHIMA, 2006

Component 12/Unit 11

Health IT Workforce Curriculum  
Version 1.0/Fall 2010

7

---

---

---

---

---

---

---

---

## Definitions of Data

### Example:

An organization is preparing to participate in a nationally recognized surveillance system for public reporting of hospital-acquired infections. First, they review the definitions for all variables to be submitted to assure they match the definitions required by the database.

Component 12/Unit 11

Health IT Workforce Curriculum  
Version 1.0/Fall 2010

8

---

---

---

---

---

---

---

---

## Definitions of Data

### Key process recommendations:

Develop a data dictionary that represents agreement of all users on the standard definitions, normal and abnormal values, variable properties, etc., that are included in the data. Responsibility for oversight of the management of the data must be assigned.

Component 12/Unit 11

Health IT Workforce Curriculum  
Version 1.0/Fall 2010

9

---

---

---

---

---

---

---

---

## Data Quality Attributes

- Definition
- Accuracy
- Accessibility
- Comprehensiveness
- Consistency
- Currency
- Timeliness
- Granularity
- Precision
- Relevancy

Component 12/Unit 11 Health IT Workforce Curriculum 10  
Version 1.0/Fall 2010

---

---

---

---

---

---

---

---

## Accuracy of Data

- **Correct values**
- **Valid**
- **Attached to the correct patient record**

**AHIMA, 2006**

Component 12/Unit 11 Health IT Workforce Curriculum 11  
Version 1.0/Fall 2010

---

---

---

---

---

---

---

---

## Accuracy of Data

**Example:**  
The patient's health insurance information must be accurate for billing purposes. If a reference table is available with the codes of all pre-approved insurance providers, an automated process can be put into place to verify data accuracy. Other insurer codes can be entered manually after pre-approval.

Component 12/Unit 11 Health IT Workforce Curriculum 12  
Version 1.0/Fall 2010

---

---

---

---

---

---

---

---

## Accuracy of Data

**Key process recommendations:**  
 Establish policies/procedures and provide guidance to ensure integrity, validity and reliability of the data.  
 AHIMA, 2006

Component 12/Unit 11 Health IT Workforce Curriculum 13  
 Version 1.0/Fall 2010

---

---

---

---

---

---

---

---

## Data Quality Attributes

- Definition
- Accuracy
- Accessibility
- Comprehensiveness
- Consistency
- Currency
- Timeliness
- Granularity
- Precision
- Relevancy

Component 12/Unit 11 Health IT Workforce Curriculum 14  
 Version 1.0/Fall 2010

---

---

---

---

---

---

---

---

## Accessibility of Data

- Easily obtainable
- Legal to access with strong protections and built-in controls

AHIMA, 2006

Component 12/Unit 11 Health IT Workforce Curriculum 15  
 Version 1.0/Fall 2010

---

---

---

---

---

---

---

---

## Accessibility of Data

### Example:

A quality improvement team at a home care agency needs demographic data to complete a clinical outcome analysis for their congestive heart failure patients. They complete the required forms and are granted time-limited access to designated tables in the agency's data warehouse that contain the needed demographics.

Component 12/Unit 11

Health IT Workforce Curriculum  
Version 1.0/Fall 2010

16

---

---

---

---

---

---

---

---

## Accessibility of Data

### Key process recommendations:

Gain consensus on defined minimum amount of data to be accessible to participants to support their mission/objectives.  
Provide protection controls with traceable audit capability.

AHIMA, 2006

Component 12/Unit 11

Health IT Workforce Curriculum  
Version 1.0/Fall 2010

17

---

---

---

---

---

---

---

---

## Data Quality Attributes

- Definition
- Accuracy
- Accessibility
- Comprehensiveness
- Consistency
- Currency
- Timeliness
- Granularity
- Precision
- Relevancy

Component 12/Unit  
11

Health IT Workforce Curriculum  
Version 1.0/Fall 2010

18

---

---

---

---

---

---

---

---

## Comprehensiveness of Data

- Required data items are included
- The entire scope of required data are collected
- Intentional limitations are documented

AHIMA, 2006

---

---

---

---

---

---

---

---

## Comprehensiveness of Data

### Example:

Hospitals are at risk for non-payment if a patient develops a pressure ulcer in their care. Prompts can be written to require a detailed assessment to determine if any pressure areas were present on admission. This assessment includes the location, size and extent of tissue damage.

---

---

---

---

---

---

---

---

## Comprehensiveness of Data

### Key process recommendations:

Establish guidelines for the most recent and comprehensive data required for the participants mission/objectives.

AHIMA, 2006

---

---

---

---

---

---

---

---