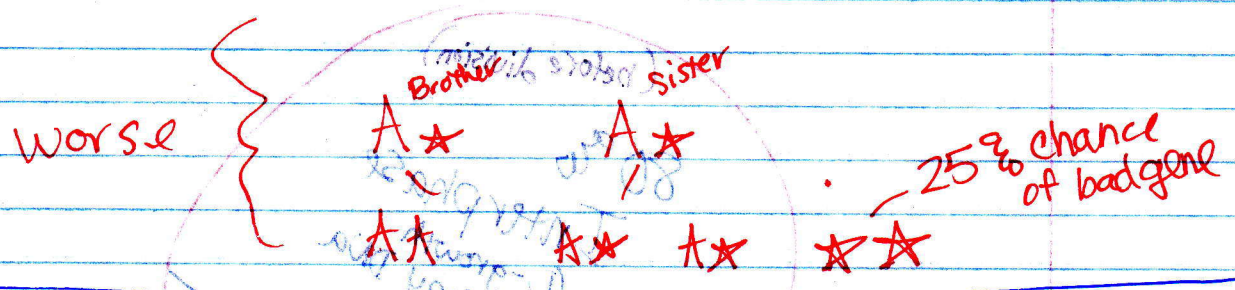
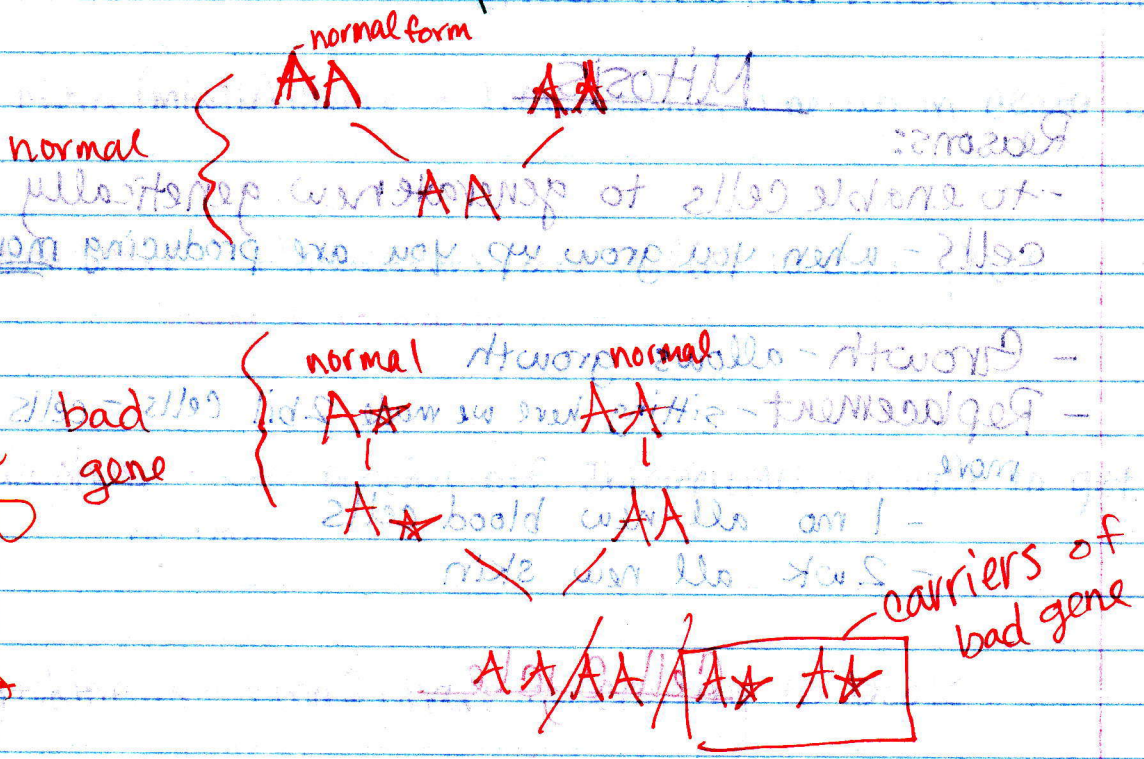


- Bumblebee Notes -

- flowers start w/ both male & female parts
- flowers need variations to come from a diff. flower
- Winning in the game of biology!
- flowers cannot pollenate themselves.

Impbreeding (side note) Bumper I



- flowers recruit bees w/ reward of sugar water
- uses UV patterns to attract bees

Static ← bee has a pos. charge  
 flower gives off neg. charge  
 - static charge makes pollen stick to bee  
 - flowers turn off charge after bee.